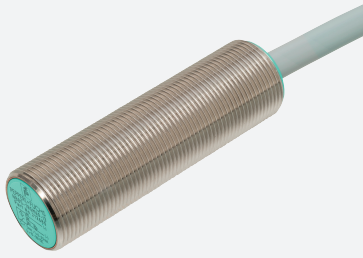


Inductive analog sensor

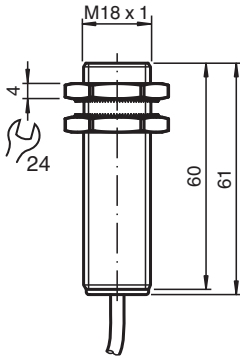
NBB5-18GM60-I



- Inductive analog sensor
- Output 4 mA ... 20 mA
- Flush mounting



Dimensions



Technical Data

General specifications	
Output type	Analog current output
Installation	flush
Output polarity	DC
Measuring range	1 ... 5 mm
Output type	3-wire
Nominal ratings	
Operating voltage	U_B 10 ... 30 V DC typ. 20 V DC
Reverse polarity protection	yes
Repeat accuracy	0 ... 80 μ m
No-load supply current	I_0 \leq 12 mA
Analog output	
Output type	4 ... 20 mA
Slope of output characteristic	4 mA / mm
Linearity error	$\leq \pm 5$ % of full-scale value
Load resistor	$\leq 1000 \Omega$ typ. 500 Ω
Rate of current rise	
4 ... 20 mA	max. 30.9 A/s
20 ... 4 mA	max. 11.1 A/s
Recovery time	1 ... 10 ms , typ. 5 ms

Release date: 2025-07-23 Date of issue: 2025-07-23 Filename: 303098_eng.pdf

Refer to "General Notes Relating to Pepperl+Fuchs Product Information".

Pepperl+Fuchs Group
www.pepperl-fuchs.com

USA: +1 330 486 0001
fa-info@us.pepperl-fuchs.com

Germany: +49 621 776 1111
fa-info@de.pepperl-fuchs.com

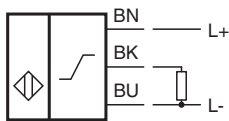
Singapore: +65 6779 9091
fa-info@sg.pepperl-fuchs.com

PF PEPPERL+FUCHS

Technical Data

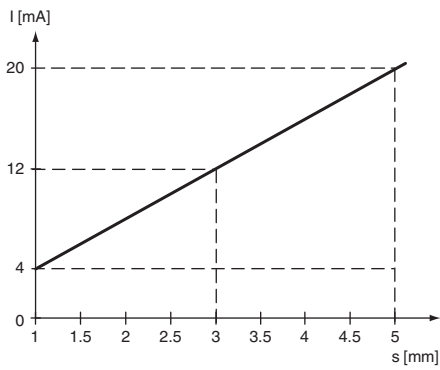
Adjustment tolerance zero point		$\leq \pm 5$ % of full-scale value
Temperature drift		$\leq \pm 0.15$ %/K of full-scale value
Residual ripple		± 125 μ A
Compliance with standards and directives		
Standard conformity		
Standards		EN IEC 60947-5-2
Approvals and certificates		
UL approval		cULus Listed Circuitry: Class 2 Power Source Enclosure Type Rating: Type 1 Supply/Switching Voltage: 30 V DC
CCC approval		CCC approval / marking not required for products rated ≤ 36 V
Ambient conditions		
Ambient temperature		-25 ... 70 °C (-13 ... 158 °F)
Mechanical specifications		
Connection type		cable
Housing material		brass, nickel-plated
Sensing face		PBT
Degree of protection		IP67
Cable		
Wire end ferrules		yes
Cable diameter		4.6 mm \pm 0.2 mm
Bending radius		> 10 x cable diameter
Material		PVC
Color		grey
Number of cores		3
Core cross section		0.5 mm ²
Length	L	2 m
Dimensions		
Length		60 mm
Diameter		18 mm

Connection Assignment

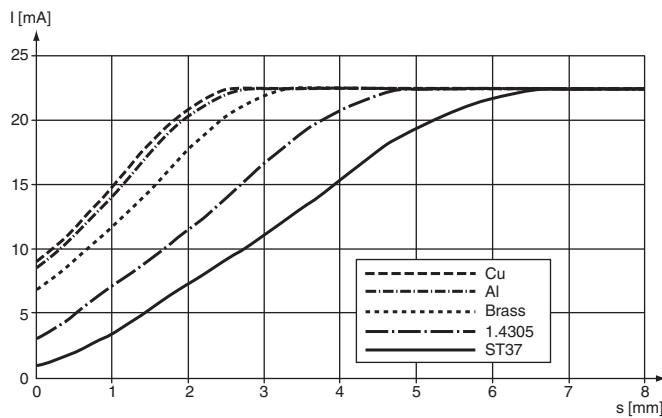


Characteristic Curve

Output characteristics



Reduction factor



Release date: 2025-07-23 Date of issue: 2025-07-23 Filename: 303098_eng.pdf